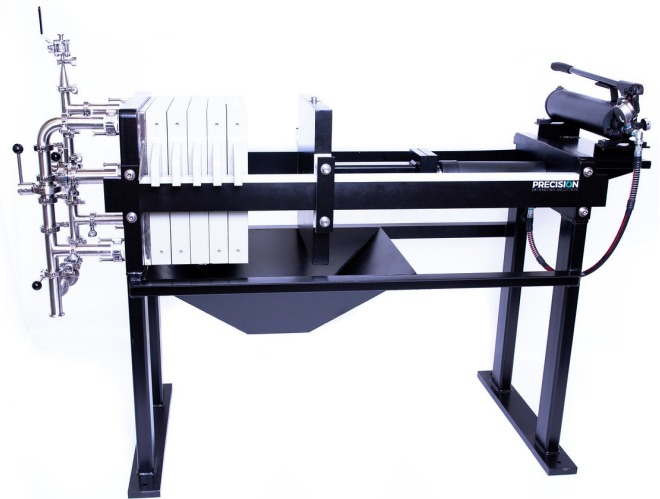
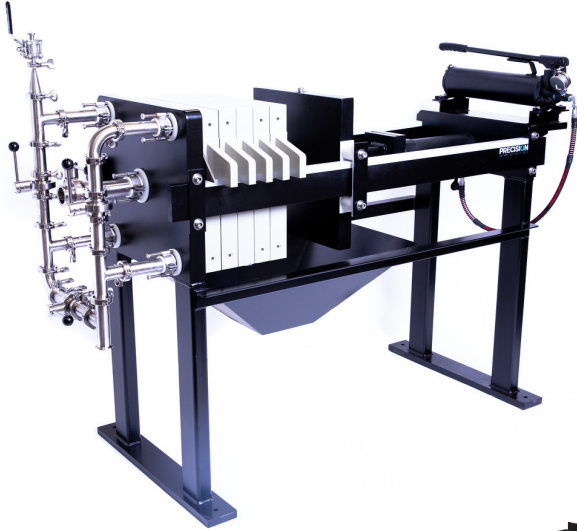


3,600 L
OF FILTERING PER 8 HOURS

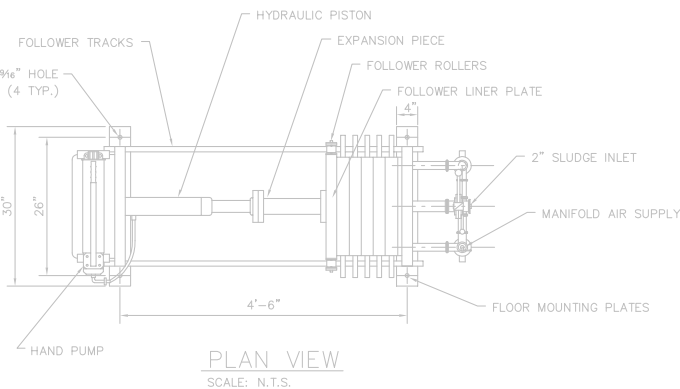


EQUIPMENT FEATURES

- Ideal for post-winterization, pressure filtration of crude oil, and fines filtering
- Up to 3,600 L of filtering per 8 hours
- Food grade wetted parts
- For use in CIDI laboratories
- GMP compliant
- Manual hydraulic pump and cylinder
- Heavy duty hydraulic cylinder for opening and closing of press
- Polypro gasketed recessed plates for a leak free operation
- Air blown manifold piping for air drying filter cakes
- Includes advanced spare parts kit

EQUIPMENT SPECIFICATIONS

Dimensions (approx.)	75" L x 32" W x 52" H
Weight	1,500 lbs.
Capacity	1 Cubic Foot
Expandable Capacity	+ 1 Cubic Foot (2 Cubic Foot Total)
Filter Area	13.6 sq. ft.
Air Compressor	5 HP 20 CFM
Hydraulic Pump	Manual Hand Pump Closure
Temperature	-40 °F - 100 °F
Max Feed Pressure	100 PSI
Average Flow Rate (est.)	2 GPM
Air Blow Down Pressure	15-25 PSI
Filter Plate Size	470mm
Filter Cloth Material	Polypropylene
Frame Material	Carbon Steel
Manifold Material	304 Stainless Steel
Sludge Chute	8" x 8" Chute Opening
Gaskets	EPDM, Silicone
Warranty**	One-Year Manufacturer Warranty



** SEE WARRANTY CARD**

*PLEASE REFER TO OPERATIONAL MANUAL FOR IMPORTANT SAFETY WARNINGS & LEGAL DISCLAIMERS